

RIVER SHORES PLANTATION

A RE-SUBDIVISION OF LOTS 3,4,5,6,11,12,12½,14 AND 15 KITCHING'S SUBDIVISION PLAT BOOK 2, PAGE 19, AS RECORDED IN PUBLIC RECORDS ST. LUCIE COUNTY (NOW IN MARTIN COUNTY) FLORIDA. ALL LYING IN SECTION 30, TOWNSHIP 37 SOUTH, RANGE 41 EAST, MARTIN COUNTY, FLORIDA

PHASE ONE

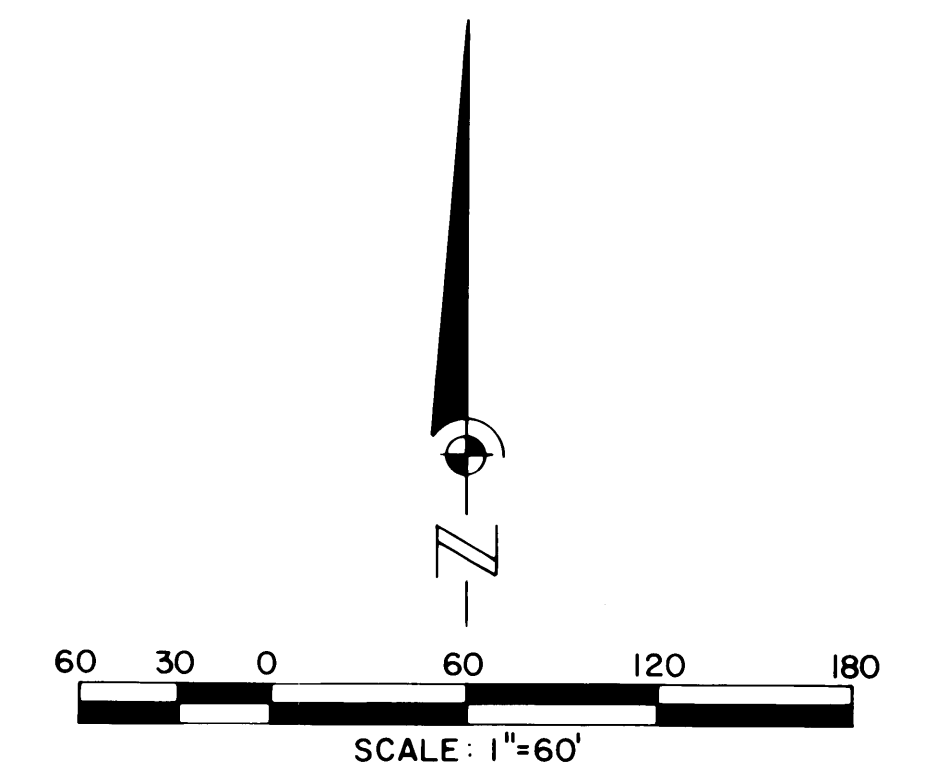
WESTWOOD
(PB. 3, P. 106)

CLERK'S RECORDING CERTIFICATE

I, LOUISE V. ISAACS, CLERK OF THE CIRCUIT OF MARTIN COUNTY FLORIDA, HEREBY CERTIFY THAT THIS PLAT WAS FILED FOR RECORD IN PLAT BOOK 58, PAGE 58, MARTIN COUNTY, FLORIDA PUBLIC RECORDS THIS _____ DAY OF _____, 1981.

LOUISE V. ISAACS, CLERK OF CIRCUIT COURT MARTIN COUNTY, FLORIDA
BY: _____ DEPUTY CLERK
FILE No. _____

D.P. DeBerry & Assoc. Inc.
ENGINEERS PLANNERS SURVEYORS
955 S. Federal Hwy. STUART, FLA.

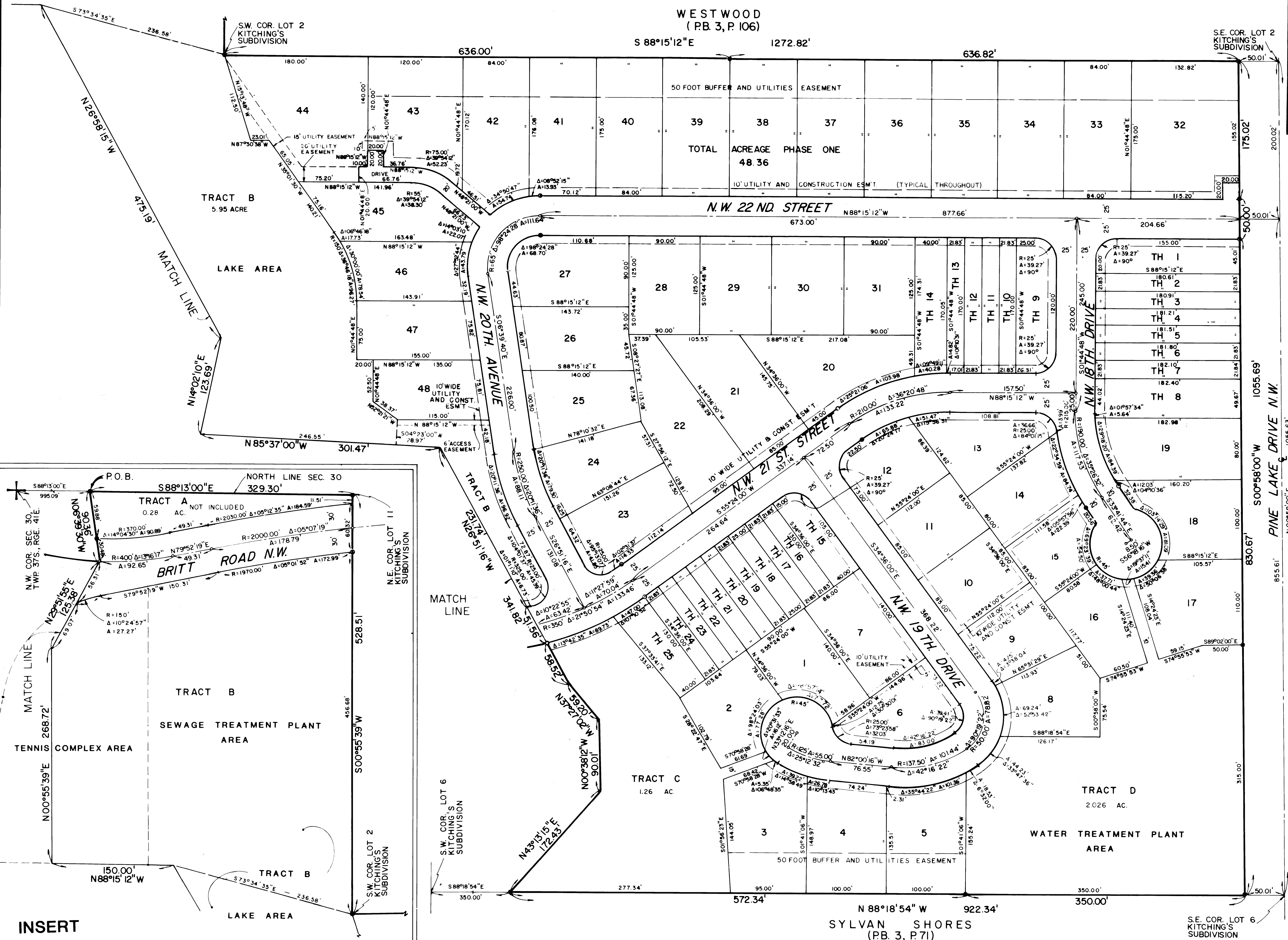


MARCH, 1981

- LEGEND —
- ⊙ Denotes Permanent Reference Monument
 - Denotes Permanent Control Point

- NOTES —
1. Bearings shown hereon are assumed and referenced to the north line of Section 30, Township 37 South, Range 41 East, Martin County, Fla.
 2. Access to all housing units shall be from internal road systems only.
 3. There shall be no lot splits, except to create larger lots.

SEE INSERT



INSERT